



2015 Earth Fair – School Field Trip Guidelines

Friday April 24th, 2015

ARRIVAL

- Student bus loading/unloading is in the Center Parking lot (#? on the map). Enter the park from Castor Road off of Lapeer through the main park entrance. After student drop-off all buses **must** move to the gravel East Parking lot off of County Park Drive (#). Parents may park in the East, Center or North parking lots.
- Students on buses and parents in cars can all meet at the check-in tent outside of the Exhibition Hall (#? on the map). At the Exhibition Hall check-in tent you will pick up your cloth Earth Fair bags, scavenger hunts, and leave your coolers or lunch bins.
- The Exhibition Hall is where you will return should you decide to take advantage of an indoor pre-scheduled lunch time.
- A detailed park map is included in this packet. It is important to make copies and share this with other teachers, chaperones and bus drivers!

CHECK IN

- One teacher from each class must check-in with Liane Allen, School Field Trip Coordinator, at the check-in tent outside of the Exhibition Hall. Teachers will receive program guides, bags and scavenger hunts for students at check-in.

ACTIVITIES

- Please divide your class into smaller groups of children as it works best for the hands-on activities. **We strongly recommend groups of 5-6 children.**
- An adult chaperone must stay with their group at all times. Chaperones are expected to assist the children with the activities.
- The Historical Village buildings will be open for tours that day led by the Wales Historical Society members. A tractor-pulled wagon will be giving rides to and from all locations.
- Activities will be set up in the three white exhibit buildings (# on map). There are approximately 20 booths to visit per building. Plan on spending ~30 minutes in each building.
- Each student will receive a scavenger hunt to complete. This is optional. The scavenger hunt is designed to keep children engaged, learning and focused. Each student that turns in a completed sheet receives a prize.
- Many vendors will have items for sale, ranging from \$1.00-\$15.00. Students may want to bring along spending cash.

TRASH FREE LUNCH

- **The 2015 Earth Fair is a Trash Free Lunch zone!** We REQUIRE all students to bring a lunch with no garbage to throw away. If you do have disposable items we want you to “pack in and pack out”. Take your garbage with you and reuse or recycle your waste.
- Your group will be assigned a lunch time should you pre-register to eat indoors at the Exhibition Hall. Picnic tables are set-up near the buildings or you may choose a spot on the grass. The Pine River Picnic Pavilion may also be used. There is no refrigeration on-site.
- There will be food vendors and concessions on-site where lunch items may be purchased. However, in an effort to conserve time and space, it is recommended that **all students** bring a sack lunch.

OTHER

- Dress warm and be prepared for the weather! Even though it is spring, it can be pretty cool and windy inside the exhibit buildings. Bring along or dress in warm clothes, hats, gloves, and winter coat in case it is needed.
- The playground will be available for use; the Splash Zone will not be available.

NOTE: If you have any questions prior to Friday, April 24th, please contact Liane Allen at (810) 989-6935 or lallen@stclaircounty.org. For complete list of Earth Fair events and activities, visit www.EarthDayFair.com.



Trash FREE Lunch

*Remember if you can not pack a trash free lunch, "PACK-IN AND PACK-OUT"



WHAT IS A TRASH-FREE LUNCH?

A lunch with very little or no garbage to throw away. Example: Instead of buying the small prepackaged bags of pretzels or crackers buy the large box and pack them into your reusable container.

5 STEPS to a Trash-Free lunch

(courtesy of reuseit.com)



STOP throwing away your money, literally! Replace disposable packaging with long-lasting, safe reusable items. These are the 5 things you'll need to get started:

1. **Reusable lunch bags**—Replace the brown bags with something safe and sustainable. Reusable bags are better looking and better for the environment.
2. **Food Containers**—wastefreelunches.org estimates that by eliminating throw away wrappers and single-serving items, it can save families \$250 a year.
3. **Snack and sandwich bags**—The Sierra Club estimates that families spend \$85 per year on plastic baggies. Save money and natural resources with reusable bags and wraps.
4. **Utensils and more**—Napkins, utensils (forks & knives...) even straws can be reusable. Why throw it away when you can use it again?
5. **Reusable bottles**—Americans spend about \$16 billion each year on bottled water, that's 38 billion plastic bottles in our landfills. Break this wasteful cycle by bringing your own bottle.



OLD LUNCH BOX

- ⇒ Paper Sack
- ⇒ Juice Box
- ⇒ Peanut butter and jelly in a plastic zip bag (smooshed)
- ⇒ Chocolate snack pack pudding

NEW TRASH-FREE LUNCH

- ⇒ Reusable, insulated lunch bag
- ⇒ Water in a stainless steel thermos
- ⇒ Peanut butter and jelly in a washable plastic sandwich container (firm & fresh)
- ⇒ Grapes in a pop top reusable container

HOW TO BE TRASH-FREE AT EARTH FAIR

WHAT YOU CAN DO...

1. Challenge your school to hold a trash free Tuesday— each and every Tuesday students should bring in and take home **100%** of their lunch. If your school has a hot lunch program perhaps Tuesdays fare could be served on real dishes, not paper or foam, every little bit helps!
2. Students can help parents plan ahead and help pack their own lunch.
3. Teachers lead by example—look for ways to reward students that are “going GREEN”.
4. Be aware that “Natural Resources” are things of value provided by the Earth, they include land, plants, minerals and water. By using materials more than once, we conserve natural resources.



TIPS:

- Use green products like Itzy Ritzy Eco-Friendly Reusable Snack Bags & Kleen Kanteen
- Most pre-packaged lunch box favorites are loaded with preservatives, try packing whole foods into reusable containers.

BOOKS

Trash Free Lunch Day: Focus, Pollution *by Meredith Costain*

Don't Throw That Away: A Lift-the-flap Book about Recycling and Reusing *by Lara Bergen and Betsy Snyder*

365 Ways to Live Green for Kids:

Saving the Environment at Home, School, or at Play-Every Day! *by Sheri Amsel*

The Adventures of a Plastic Bottle: A Story About Recycling *by Alison Inches*

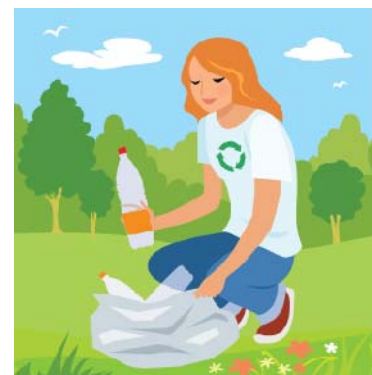
The Lorax *by Dr. Seuss*

Teaching Kids to Love the Earth *by James Kasperson*

WEB RESOURCES

bespartangreen.msu.edu

wastefreelunches.org



Courtesy of your 4-H Program
For more information contact
Liane Allen, 4-H Program Assistant

St. Clair County MSU Extension
200 Grand River Avenue Ste. 102
Port Huron MI 48060
Phone: (810) 989-6935



MICHIGAN STATE
UNIVERSITY

Extension

MSU is an affirmative-action, equal-opportunity employer. Michigan State University Extension programs and materials are open to all without regard to race, color, national origin, gender, gender identity, religion, age, height, weight, disability, political beliefs, sexual orientation, marital status, family status or veteran status.